

WORKING WITH PIXEL PERFECT PROLAB 2017

Dear Customer,

Congratulations on taking the first step in achieving top-quality photographic-prints by becoming a Pixel Perfect customer.

The response to the colour management strategies created by Pixel Perfect has been fantastic. A big thank you to all our enthusiastic supporters! We believe we have moved Australian digital imaging a quantum leap forward!

We have created this guide to enable you to get the best from our advanced colour systems. Remember that we are subject to the limitations of modern publishing technology and can never guarantee an exact colour match. We can however assure you that we will always strive to deliver you the finest result possible with the technologies available to us.

The world of electronic imaging is changing rapidly. Please enable us to keep you up to date by subscribing to our newsletter from the [News & Events](#) section of our website

We hope this guide will enable you in getting the very best out of Pixel Perfect.

Thanks again for your continued support.

Happy Imaging!!

The Team at Pixel Perfect Digital Prolab Pty Ltd

Table of Contents

Support	3
Newsletter	3
Support Contact Details	3
IMPORTANT ALERT !	3
Measuring Instruments	3
Colour Settings for all versions of Photoshop from V6 to latest	4
OPTION 1	4
OPTION 2	4
Colour confirmation procedures for all versions of Photoshop from v6 to latest	6
Monitor Profile Confirmation	6
Workroom Lighting Confirmation	6
Compare printed test image with on-screen image	6
The Perfect Digital Darkroom	7
International Standards Organisations ISO 3664 viewing conditions	7
Soft Proofing for all versions of Photoshop from v6 to latest	8
What is soft proofing ?	8
ICC profiles - Installation	8
ICC profiles - Usage	8
ICC profiles - IMPORTANT ALERT	9
Suggested Folder Structure	9
Minimum File Sizes	10
Upload your files to us	10
File Specifications for photo & inkjet printing	10
Terms	10

SUPPORT

NEWSLETTER

Please enable us to keep you up to date on our products & services by subscribing to our support newsletter from the News page at www.pixelperfect.com.au

Due to privacy laws this is an "OPT IN" list.
If your email address is already in our email database you will not be able to resubscribe.

SUPPORT CONTACT DETAILS

Support Officer : Nadish Naoroji
 Support Help Line (from Australia) : (02) 9319 0455
 Support Help Line (from overseas) : (61-2) 9319 0455
 Support email address : support@pixelperfect.com.au

IMPORTANT ALERT !

None of the colour procedures described in this document will work correctly unless you have properly profiled your monitor **WITH A MEASURING INSTRUMENT** to the international standards we subscribe to.

MEASURING INSTRUMENTS

Below are links to selected manufacturers of monitor profiling instruments.

Manufacturer	Product
xrite.com	i1Display Pro
spyder.datacolor.com	Spyder

COLOUR SETTINGS FOR ALL VERSIONS OF PHOTOSHOP FROM CS2 TO LATEST

For Mac & Windows

These are settings suggested by Pixel Perfect to enable you to work successfully with us. There are situations that will require you to modify the suggested settings. Please refer to your Photoshop manual or contact a colour consultant for more information. No liability of any kind is assumed for the use of this information.

OPTION 1

- Download the '**Photoshop Colour Setup File**' from the Support section of www.pixelperfect.com.au The file is called **PixelPerfect2017.csf**
or
www.pixelperfect.com.au/files/PixelPerfect2017.csf
- Save the file to the Photoshop default settings folder as under;
Windows : C:\Program Files\Common Files\Adobe\Color\Settings
Mac OS 10 : home/library/application support/adobe/color/settings
: (if you've renamed your "home" folder, substitute that name)
- Start or restart Photoshop, go to the Colour Settings dialog box and select the PixelPerfect2017.csf file you just downloaded from the drop-down list at the top.

OPTION 2

- Download the profile ISOcoated_v2_300_eci.icc from Support section of www.pixelperfect.com.au Click on "Download all our ICC Profiles"

Windows users copy the downloaded file to the folder below:
Windows 7 : C:\Windows\System32\spool\drivers\color


Macintosh users copy the downloaded file to the relevant folders as under:
Mac OS 10 : Library > ColorSync Profiles
- In Photoshop, go to the Color Settings dialog box.
Change the settings to match the image titled Recommended Color Settings (see below).
- Save the settings to the Photoshop default settings folder as under:

Windows : C:\Program Files\Common Files\Adobe\Color\Settings

Mac OS 10 : home/library/application support/adobe/color/settings
: (if you've renamed your "home" folder, substitute that name)

Recommended Color Settings

Color Settings
✕

 For more information on color settings, search for "setting up color management" in Help. This term is searchable from any Creative Suite application.

Settings: PixelPerfect2017 ▼

Working Spaces

RGB: Adobe RGB (1998) ▼

CMYK: ISO Coated v2 300% (ECI) ▼

Gray: Dot Gain 15% ▼

Spot: Dot Gain 15% ▼

Color Management Policies

RGB: Preserve Embedded Profiles ▼

CMYK: Preserve Embedded Profiles ▼

Gray: Preserve Embedded Profiles ▼

Profile Mismatches: Ask When Opening Ask When Pasting

Missing Profiles: Ask When Opening

Conversion Options

Engine: Adobe (ACE) ▼

Intent: Relative Colorimetric ▼

Use Black Point Compensation

Use Dither (8-bit/channel images)

Compensate for Scene-referred Profiles

Advanced Controls

Desaturate Monitor Colors By: %

Blend RGB Colors Using Gamma:

Blend Text Colors Using Gamma:

Description

PixelPerfect2017: © Pixel Perfect Prolab 2017. EOE.
 90 Abercrombie Street, Chippendale, NSW, 2008.
 Tel (02) 9319 0455
 Web : www.pixelperfect.com.au
 E-Mail : admin@pixelperfect.com.au

OK

Cancel

Load...

Save...

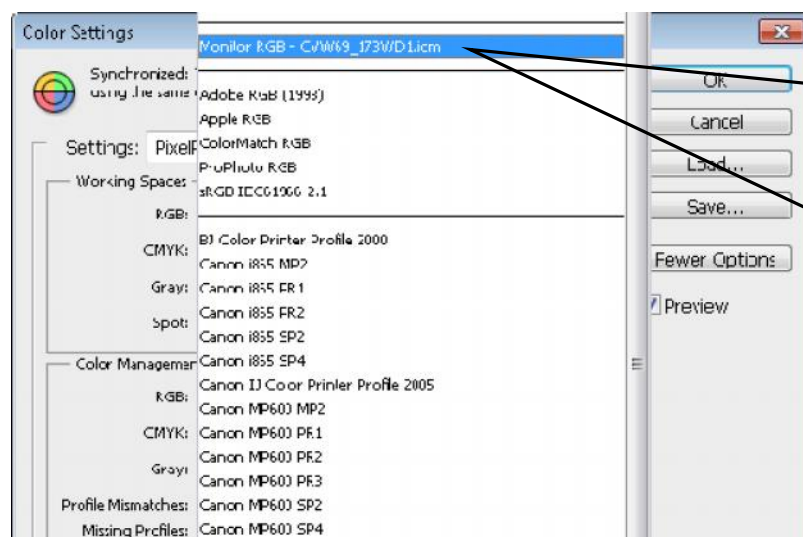
Fewer Options

Preview

COLOUR CONFIRMATION PROCEDURES FOR ALL VERSIONS OF PHOTOSHOP FROM V6 TO LATEST

MONITOR PROFILE CONFIRMATION

You must confirm that Photoshop is actually using your custom measured monitor profile. This is done in by going to the Color Settings dialog box and confirming that your custom monitor profile name shows next to "Monitor RGB". A Windows screen grab has been shown below, but the same applies to Macintosh. If you do not see your monitor profile as described, please call us. Depending on the nature of the problem, paid technical support may be required to resolve the issue.



Next to "Monitor RGB" you should see YOUR custom monitor profile name (i.e. whatever you called your profile).

PLEASE ENSURE THAT WHEN YOU RELEASE THIS DROPDOWN BOX, YOU HAVE NOT SELECTED YOUR MONITOR PROFILE AS YOUR RGB COLOUR SPACE.

THE COLOUR SPACE SHOULD STILL BE SET TO ADOBE RGB (1998) LIKE IN THE PREVIOUS SCREEN GRAB

WORKROOM LIGHTING CONFIRMATION

- Ensure your room has ambient lighting that does not strike or reflect off the face of the monitor. An ambient light level of 32 to 64 lux is recommended. Your monitor should be the brightest object in your field of vision.

COMPARE PRINTED TEST IMAGE WITH ON-SCREEN IMAGE

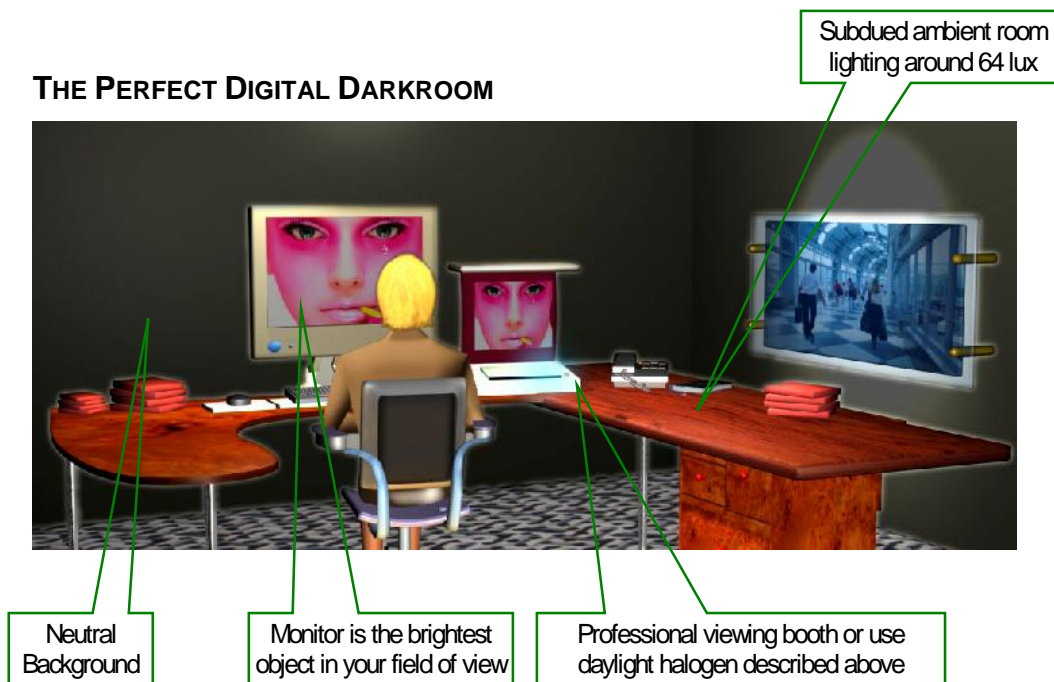
- Download then open the Pixel Perfect Test image from the Support page of www.pixelperfect.com.au
- Also request us to post you out a FREE PRINT from the same image.
- On opening the image, if you get a "Profile Mismatch" error, you have not set the RGB working space to Adobe RGB (1998). Please change this setting to Adobe RGB (1998) and reopen the file.
- Open the test image print we posted to you. If your monitor is on a desk, place the print on the floor, under the desk.
- Light the print with a daylight-balance halogen light (globe available from us). The distance from print to light should be around 800mm. It is important to light the print without stray light spilling onto the monitor (hence the previous recommendation to place the print on the floor so the tabletop acts as a shield).

- The print and monitor image should be a close match.
Note : There are many colours in our test image (which you see on your monitor) that are impossible for ANY current print technology to reproduce. You will find this limitation most apparent on saturated colours. Follow the instructions in the next section on Soft Proofing. This feature is only available in Photoshop V6 or later.
- If you have a close monitor-to-print match, you have verified that the images you edit and view on your monitor will reproduce accurately to our digital printer.
- If you have a poor match, please go back to previous sections and check all settings.
- It is assumed that you have not made any changes to your operating system, software or hardware since your monitor was profiled. If you have made any changes, your monitor profile is invalid. Profiling your monitor again with a measuring instrument is the best option.
- Return the test print into dark storage. This test image will only be of assistance if it is stored properly in a cool, dry, dark place.

That's it!

You have a correctly profiled monitor and are set to go!

THE PERFECT DIGITAL DARKROOM



INTERNATIONAL STANDARDS ORGANISATIONS ISO 3664 VIEWING CONDITIONS

ISO 3664:2000(E) states that : The ambient illumination for colour monitors.....shall be less than or equal to 64 lux.

SOFT PROOFING FOR ALL VERSIONS OF PHOTOSHOP FROM V6 TO LATEST

WHAT IS SOFT PROOFING ?

Soft proofing = proofing in software without having to commit to a hard copy (print).

In the past, to decide if your image looked correct on any media you had to actually print it. Photoshop delivers an exciting new option; the ability to proof, in software, on your profiled monitor without printing a hard-copy.

STOP

You cannot successfully soft-proof unless you have correctly profiled your monitor to the international standards we subscribe to USING A MEASURING INSTRUMENT!!

ICC PROFILES - INSTALLATION

Use your web browser & go to the Support page at www.pixelperfect.com.au

Click on Download our ICC Profiles.

For your information ICC stands for International Color Consortium.

- Our profiles are generally named with the following naming convention
Printer Name_Media Type_TechInfo_TechInfo_TechInfo
The profile below is our default Lambda Printer with Fuji Lustre PD media.
Lambda_FujiLustrePD_i1P2_1600p_Smooth.icm

Most users need not concern themselves with the TechInfo sections.

If you need clarifications on the TechInfo please email

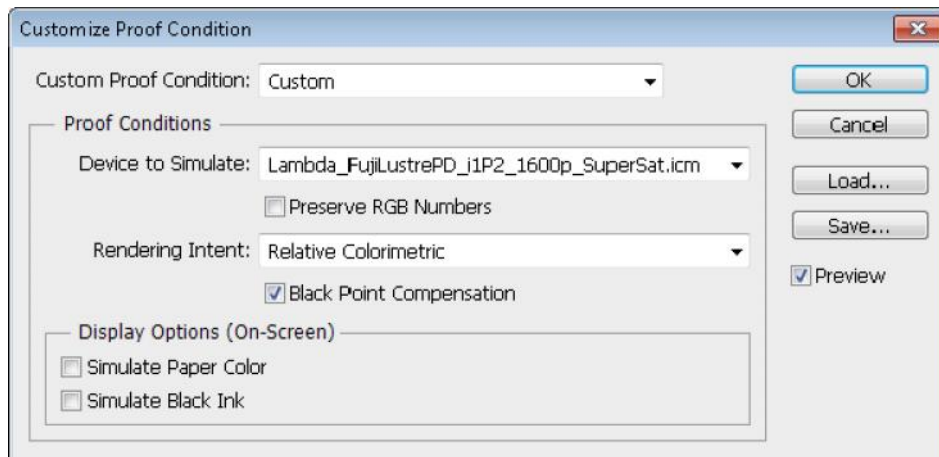
support@pixelperfect.com.au and ensure you provide your mobile number.

We will call you to clarify any doubts you may have.

- Download whichever profiles you need to a temporary location on your hard disk. Profiles generally have a file extension of .icc or .icm
You may need to unzip a profile if it ends with the extension .zip
 - Windows users copy the profile to this folder:
Windows 7 : C:\Windows\System32\spool\drivers\color
 - Macintosh users copy the profile to this folder:
Mac OS 10 : Library > ColorSync Profiles

ICC PROFILES - USAGE

- Open a RGB image with bright saturated colours (preferably our test image).
- In Photoshop go to View>Proof Setup>Custom and setup the dialog box as shown in the following screen grab.
Clicking / Unclicking the Preview tick-box shows you the with-profile / without-profile results.



- In Device to Simulate section, select the profile of the printer + media you wish to print to.
When the Preview box is ticked you will see on your monitor how the larger colour gamut of your image may be compressed to the smaller colour gamut of photographic or inkjet media.
- **IMPORTANT NOTE**
Please always send us the full-gamut Adobe RGB (1998) image for printing. Do not apply the soft-proofing profile in any way.

ICC PROFILES - IMPORTANT ALERT

- The technologies we use at Pixel Perfect are state of the art. Understand and work within the limits of these technologies.

Please do NOT be disappointed that the color gamut of photographic, press & inkjet printers is smaller than that of your monitor, scanner and digital camera. EVERY print technology on the planet has a smaller colour gamut than your camera & monitor.

Use the soft-proofing feature to be **forewarned** about possible gamut compression and you should NEVER have to re-print a job.

Our hope is that you will never again say, "But it looked different on my monitor"!

SUGGESTED FOLDER STRUCTURE

If you use the "Suggested Folder Structure" you will not have to rename any files.

This makes the ordering of hundreds of individual files very efficient.

Download "Suggested Folder Structure" from the Support page at

www.pixelperfect.com.au

IMPORTANT :

Remember to delete any unused folders.

MINIMUM FILE SIZES

Another reminder that the smallest images that we auto-cut is 3.5 x 5 inches.
See our Wallet Print service if you need smaller prints.

UPLOAD YOUR FILES TO US

FILE SPECIFICATIONS FOR PHOTO & INKJET PRINTING

- OUR PRICING IS FOR PRINT-READY FILES ONLY.
PRINT-READY FILES ARE:
 - File Format : JPEG
 - Colour Space : ADOBE RGB (1998)
 - Pixels Per Inch : 300 PPI at REQUIRED PRINT SIZE
 - File Features : DELETE LAYERS, CHANNELS, MASKS & PATHS
- PRINTS ARE CUT TO YOUR EXACT FILE SIZE - YOU MUST ADD A BORDER TO THE IMAGE IF YOU REQUIRE ONE ON YOUR PRINT.
- ANY LABOUR REQUIRED FOR YOUR JOB INCURS A LABOUR FEE CHARGEABLE PER MINUTE (MINIMUM 5 MINUTES). See our Price List for rate.
- LABOUR IS CHARGEABLE FOR;
 - CONVERTIING COLOUR SPACE (e.g. FROM sRGB or CMYK to Adobe RGB 1998)
 - RESIZING FILES
 - ADDING BORDERS (SPECIFY SIZE, COLOUR, INSIDE / OUTSIDE)
 - FLATTENING LAYERS
 - CROPPING
 - FILE RENUMBERING OR RENAMING
- JOB TURN AROUND TIME 3 TO 5 DAYS (IN-LAB) DEPENDING ON PAPER TYPE.
100% RUSH RATE APPLIES TO ALL SAME-DAY SERVICE
- EMERGENCY PRINTING SERVICE IS AVAILABLE FOR "NO PAPER PREFERENCE" ORDERS. (We print on whichever paper is scheduled. job ready for collection by 4pm)
 - 100% rush rate applies
 - We will call you when job is ready for collection
- MINIMUM NORMAL ORDER VALUE IS \$25

TERMS

- Use of the Pixel Perfect Hightail service indicates acceptance of these terms.
- Pixel Perfect does not accept any liability for compression artefacts or data loss, regardless of cause.